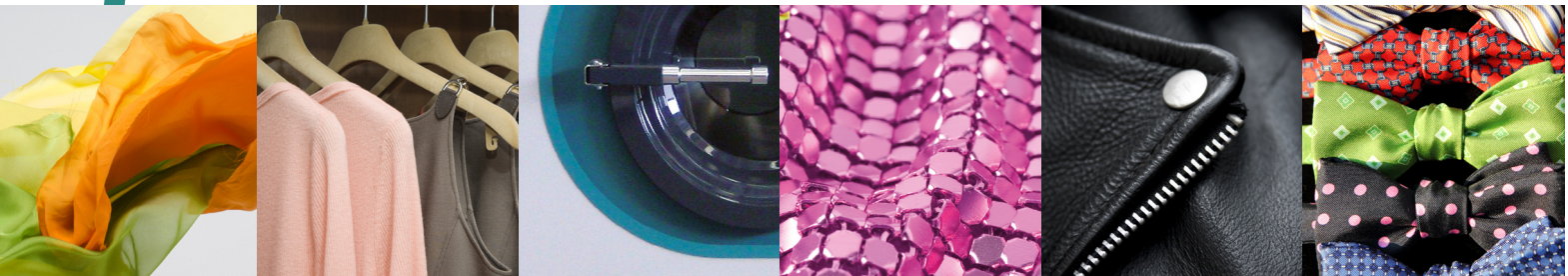


KM-C

Multi-solvent Cartridge machines

Dry Cleaning Machines designed for use with the popular **Class III A** alternative solvents.

Realstar... Leading the World in Technology for Alternative Solvent Dry Cleaning Machines



Efficient, Economical, Affordable.

Three challenges must be met when designing a machine for operation in a dry cleaning plant today:

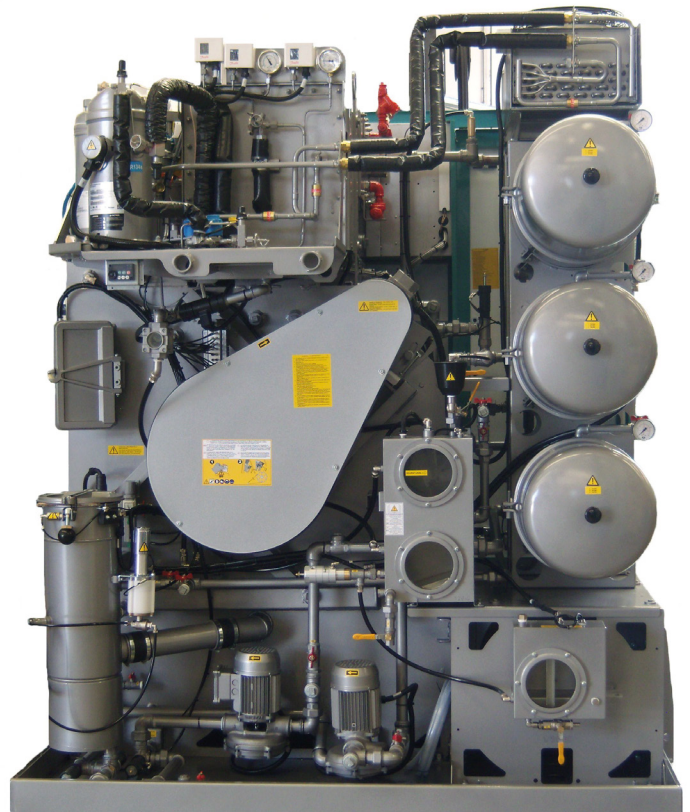
- It must be safe for the operator
- It must meet or exceed all governmental rules and regulations, domestic US, European and International
- It must be easy to use!

REALSTAR engineers have designed a modern alternative Multi-solvent machines that meet the above requirements for use with any Class III A solvents.



KM 218 C

Load capacity of 40 Lbs (18 Kg.)
Two tanks and three large format cartridge filter housings, total of 12 cartridges



PULSAR D601 with COMBI System

The most advanced control system found on any dry cleaning machine today. The **REALSTAR Pulsar D601 with Combi System** makes available 20 different programs for both operation as well as maintenance of the machine. It is easily self programmable by the operator and allows any portion of any program to be modified at any time.

A memory card feature makes it very easy to transfer identical programs to other machines. Manual machine operations are permitted as well.

Realstar KM - C Series

The innovative **REALSTAR Multi-solvent** dry cleaning machines, **KM-C Series**, are offered in two sizes, 40 and 55 - 60 lb. capacities, each with two self cleaning round solvent tanks with solvent level control front sight glasses.

These new models feature non distillation dry cleaning, and an air cooled refrigeration system that requires no water, designed to save costs of acquisition and operation, while at the same time protecting our environment.

Independent filter circuits with two separate pumps, and a powerful cartridge filtration system, are your assurances of clean solvent and high quality cleaning.

Control systems are located on the front of the machines, making the operation easy and efficient.

Professional dry cleaners know they can count on **REALSTAR** technology and design to produce the finest possible cleaning results utilizing **Class III A** solvents.

KM 225 C

Load capacity of 55 ÷ 60 Lbs (25Kg.)
Two tanks and four large format cartridge filter housings, total of 16 cartridges



REALSTAR Pulsar D601 with Combi System, allows the operator to preset drying temperatures, both inlet and outlet, solvent temperatures, machine motor speeds, and dosing pump operations, "set it and forget it"! Its diagnostics capability makes it easy to solve any problems and keep machine down time to a minimum.

With the **Pulsar D601 with Combi System by REALSTAR**, the future is here today. It is simply the best control system to be found in our industry.

STAINLESS STEEL Components

- Button Trap
- Water Separator
- Supplementary water separator
- Solvent filter canisters
- Basket
- Drying Tunnel

KM-C

		KM 218 C	KM 225 C
LOAD CAPACITY (Ratio 1:20)	Lbs	40	55 ÷ 60
BASKET			
Volume	cu.ft.	12	17.7
Diameter	inches	35.4	39.4
Depth	inches	21	25.2
Wash speed	rpm	20 ÷ 50	20 ÷ 50
Extract speed	rpm	300 ÷ 520	300 ÷ 520
Door opening	inches	20	20
TANKS			
Useful volume tank 1	gal	31	38
Useful volume tank 2	gal	31	38
CARTRIDGE FILTER			
Volume Cartridge filter housing	gal	27.8x3 = 83.4	27.8x4 = 111.2
Tubes numbers	nr	3	4
Cartridges quantity	nr	4 x 3 = 12	4 x 4 = 16
ELECTRIC POWER 220V 3ph 60Hz			
Working power (STEAM Machine)	Kw	10	10.5
Wash/Extract motor (with Inverter)	Hp	1.7 ÷ 4.7	2.7 ÷ 7.5
Solvent pump motors	Hp	1	1
Fan motor	Hp	3.5	3.5
Refrigerator compressor	Hp	7	7
CONNECTIONS SUPPLY			
Compressed air inlet	∅	1/4"	1/4"
Water inlet	∅	3/4"	3/4"
Water outlet	∅	3/4"	3/4"
Steam heater inlet	∅	1/2"	1/2"
Condensat Heater outlet	∅	1/2"	1/2"
MACHINES DIMENSIONS			
Width front Machine	inches	70.9 + 6	78.7 + 6
Depth	inches	65	74.8
Height With Fan	inches	83.5	86.2
MACHINES WEIGHTS			
Empty machine weight	lbs	2981	3858
Noise Level	dB (A)	70	70

Specifications subject to change without notice

Standard features:

- Two Self-cleaning round tanks with level control sight-glasses
- Steam Heating
- Floor guard Solvent safety tray
- Air-operated interlocks and micro-switches on all doors
- INVERTER drive wash motor
- Electronic and self-cleaning Dry Control
- Supplementary Water Separator
- Automatic Soap Pump
- Back plate cleaning design
- Quick connect nitrogen safety system
- Microprocessor control system, self-programmable, 14 languages
- Electronic temperatures control
- Sight glasses on water separator
- Oversized loading door
- Double air lint filter
- Automatic button trap drying
- Solvent filtration with large format Cartridges
- Steam Trap

Available Option on demand:

- WATER SOLVENT COOLING SYSTEM
- LED DOOR Lighting system
- JET SOLVENT cleaning system

All electronic components are ETL listed (NORTH AMERICA) or CE Standard



REALSTAR USA
 1900 Meredith Park Drive
 McDonough, GA 30253
 Phone: (404) 363-6973
 Fax: (404) 363-8699
 Toll Free: 1-888-822-7827
www.realstarusa.com

Proudly presented by